



Enterprise Multi-WAN Gigabit VPN Router GWN7000

The GWN7000 is a powerful enterprise-grade multi-WAN Gigabit VPN router. Ideal for the enterprise, small-to-medium business, retail, education, hospitality and medical markets, the GWN7000 supports comprehensive WiFi and VPN solutions that can be shared across one or many different physical locations. It features high-performance routing and switching power and a hardware-accelerated VPN client/server for secure inter-office connectivity. To maximize network reliability, the GWN7000 supports traffic load balancing and failover. The GWN7000 features an embedded controller and automated provisioning master that can setup and manage up to 300+ in-network GWN series WiFi Access Points. This can be easily operated through the product's intuitive web browser user interface, which also offers a central panel to monitor and control the entire network. The GWN7000 also includes an advanced 7-layer network/application monitoring capability based on DPI (Deep Packet Inspection) technology to securely monitor all network activity.



7 Gigabit ports
(2 WAN + 5 LAN)



Hardware accelerated
VPN including PPTP, L2TP/
IPSec and OpenVPN



Embedded controller to manage
300+ GWN WiFi APs



Multi WAN ports with load
balancing and failover
to maximize connection
reliability



Intuitive Web interface to
centrally monitor/provision
the entire network



1 million packets/second routing
& 10Gbps aggregate switching
power



Rich peripheral support
(printer, NAS, file server, etc.)
through USB ports

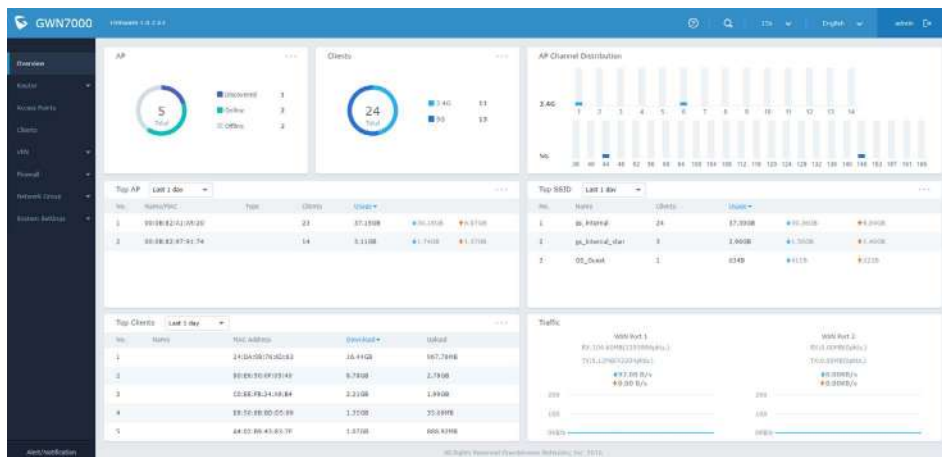


7-layer network/ application
management based on Deep
Packet Inspection (DPI) for
network monitoring



Rich firewall features including
NAT, DMZ, Port Forwarding, SPI
and UPnP

Intuitive Management Interface and Status Monitoring



Advanced Central Control

Intuitive Web-based central network management from any GWN7000 router.

Network Manageability

Embedded controller to manage 300+ WiFi APs from a central interface without requiring a separate controller hardware/software.

Automated Provisioning

Auto discovery & provisioning of in-network WiFi AP devices from any GWN7000 or GWN76xx WiFi AP.

Connectivity Reliability

Multiple Gigabit WAN ports with load balancing and failover support to maximize network reliability and business continuity.

High Performance

1M packets/second routing & 10Gbps switching power. Advanced QoS support for ultra-low-latency applications.

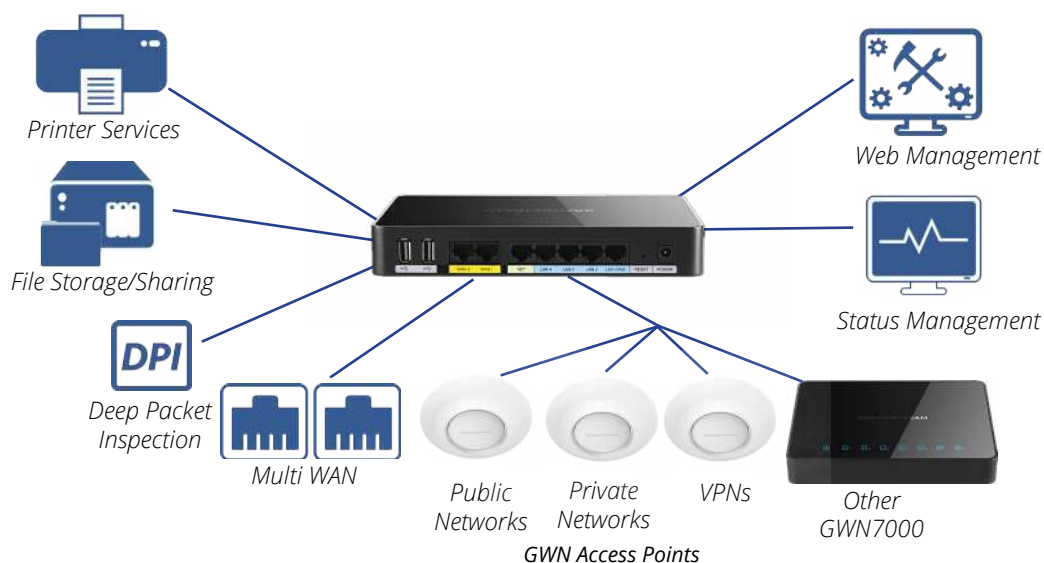
Strong Security

Supports nearly all popular VPN flavors (IPSec/L2TP/OpenVPN/PPTP) to allow flexible VPN networks linking multi-sites, branch offices & home offices.

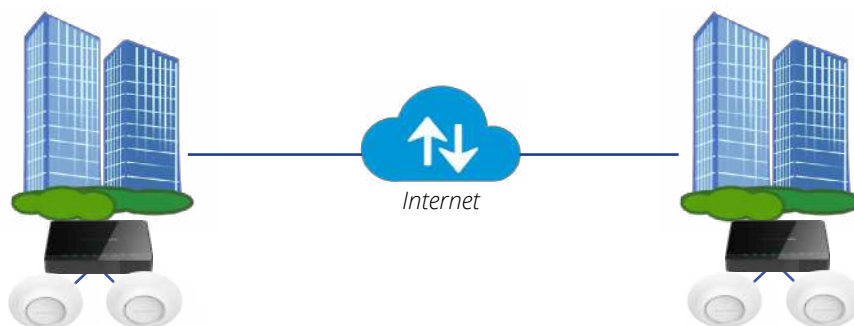
Advanced Central Control

Intuitive Web-based central network monitoring from any GWN7000 router. 7-layer network/application monitoring based on Deep Packet Inspection (DPI) technology to monitor all network activity.

Easy Setup and Management of Your Wireless/VPN Solution



Powerful Site-to-Site VPN Tunnel Solution



Specifications

Network Interfaces	2 x autosensing 10/100/1000 WAN Ports 1 x autosensing 10/100/1000 configurable as LAN or VoIP port 4 x autosensing 10/100/1000 LAN Ports
WAN	-DHCP -Static IP -PPPoE -Load balance & failover -Rule based routing
LAN	-DHCP server -DNS Cache -Multiple zones -VLAN
Routing Performance	Up to 1 million packets/second with 64-byte packet size
USB	-Printer sharing -File sharing
Auxiliary Ports	2x USB 3.0 ports, 1x Reset Pinhole
Mounting	Indoor wall mount, Desktop
LED	8 green-color LEDs for device tracking and status indication
Network Protocols	IPv4, IPv6, 802.1Q, 802.1p
QoS	VLAN, TOS, supports multiple traffic classes, filter by port, IP address, DSCP, and policing
Firewall	NAT, DMZ, Port Forwarding, SPI, UPnP
VPN	-Protocols: PPTP, L2TP/IPSec, OpenVPN -Client, Server or pass through
Deep Packet Inspection (DPI)	Yes, with 7-layer network/application monitoring
Auto Provisioning Capability	Embedded provisioning controller to manage up to 300+ GWN series WiFi APs
Management	Web, CLI
Power	802.3at PoE Included Power Supply: 12V/2A Max power consumption: 16W
Environmental	Operation: 0°C to 50°C Storage: -10°C to 60°C Humidity: 10% to 90% Non-condensing
Physical	Unit Dimensions: 200 x 136 x 37mm; Unit Weight: 570g Entire Package Dimensions: 324 x 163.5 x 54mm; Entire Package Weight: 930g
Package Content	GWN7000 Enterprise Router 12V/2A Power Adapter Quick Installation Guide GPL Guide
Compliance	FCC, CE, RCM, IC